

## The-once-and-for-all-final-Dhmodtool-user guide

Hi if you're reading this you're either bored or in trouble. In both cases I can help you with this detailed user guide.

The Dhmodtool is actually a very easy program once you understand what it does and what it needs.

So, what does it do?

Good question. For a long time it was very hard to find ATI drivers for mobile chipsets. (The mobile chip I refer to is the video card in your laptop)

If you were lucky you were able to search your manufacturers support site hoping to find an updated driver.

Most of those attempts were very disappointing.

After some clever internet people discovered that the software suite provided by ATI was only missing the mobile chipset information, they soon found a way to put the necessary info into the ATI desktop suite, the first mod was born.

A clever programmer (not me) came up with the idea to create a tool that would add that information automatically. Although his tool worked very good, it did not work the way I wanted it to. So after a few weeks of Visual basic wrestling, I made my first version.

What does it need?

Another good question. This used to be simple in the beginning but ATI started changing the drivers, added a new Control center, renamed their suite, etc..

Which leaves us with the following:

For windows XP, if you go downloading ATI drivers, you will eventually see the following:

Windows® XP drivers and software are available for the following product types:

- [RADEON](#)
- [ALL-IN-WONDER](#)
- [TV Tuners](#)
- [Remote Controls](#)
- [FireGL](#)
- [FireMV](#)
- [RAGE](#)
- [Motherboards with ATI Graphics](#)
- [Notebooks with ATI Graphics](#)

Now here is the first confusing part, what do I need to choose?

Well the tool **ONLY WORKS WITH RADEON SOFTWARE!**

Which means you need to select the RADEON from the list.

Even if you have a mobile FireGL card, you still select RADEON from the list.

Then:

RADEON

Display Drivers and Software for RADEON Products

1. [Catalyst 6.8 Windows XP - Driver Download](#)
2. [ATI Multimedia Center 9.15](#)
3. [HYDRAVISION - For RADEON and Mobile ATI Products](#)
4. [Catalyst Crew Feedback](#)

Here you choose the Catalyst X.X Windows XP – Driver Download

The X.X stands for the version

In this case 6.8 means that the driver was released in 2006 In the 8<sup>th</sup> month.

Next screen gives us:

Connection Speed	Catalyst Component	Download Link	File Size (KB/MB)	Date Posted	Additional Info and components
High Speed (Cable / DSL)	Microsoft .NET Framework	Download 1 of 2	22.4	04/06/06	This is a required download.
	Catalyst Control Center Package	Download 2 of 2 or ↑ ↓	34.7	08/18/06	Display and WDM Drivers included in this bundle
Low Speed (Dial-up)	Display Driver Only	Download 1 of 3	12.4	08/18/06	
	Catalyst Control Center Only	Download English 2 of 3	15.1	08/18/06	English Language Only  Also available in other languages. Please select your preferred language: <div>English ▼</div>
	WDM Integrated Driver Only	Download 3 of 3	3.9	08/18/06	All-in-Wonder / VIVO products <b>RELEASE NOTES</b>

So there is plenty to download but not everything is needed.

The .net framework is needed, but you need .net framework 2.0 to run the modtool.  
So there is no need to download that version.  
If you have a fast line, download the entire Catalyst Control Center Package.  
If not download the display driver only, if you want the fancy control panel be my guest.

Alright then we have everything we need, so let's start installing!

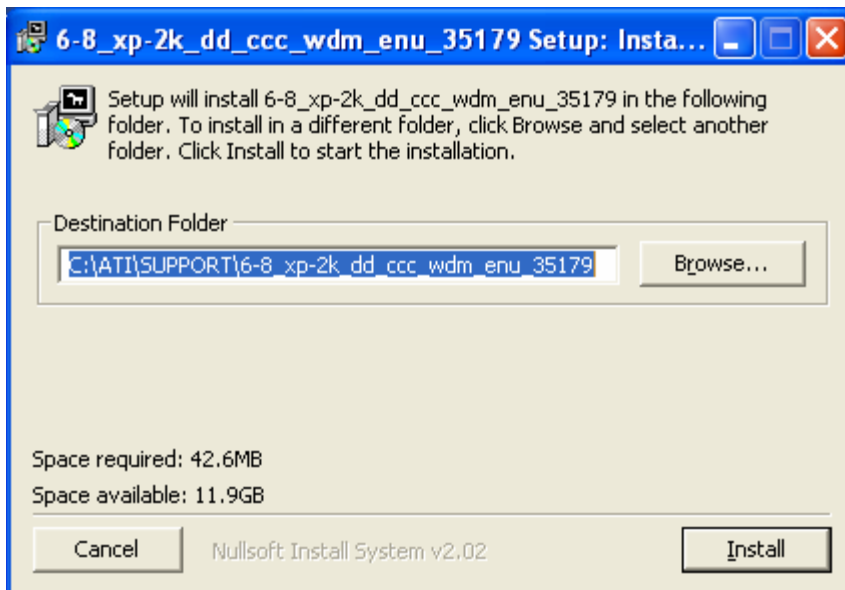
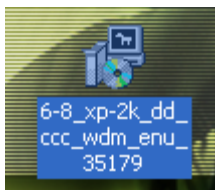
A common mistake is that most people first start the modtool, and although that seems logic, it isn't.

So you downloaded the modtool and you also downloaded the drivers.

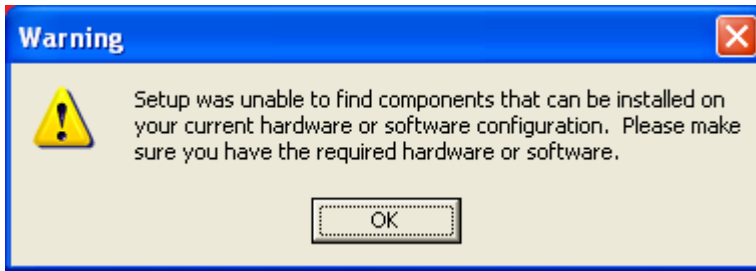
The drivers come in a compressed file that you need to launch first.

Typically these drivers start with ex: 6-8\_xp-2k\_dd.....

Doubleclick that file so the setup starts



You are asked where to extract the files, if you don't know what you are doing, just click install. After extraction, the setup will automatically begin.  
And then....



Bang the error we've all seen a thousand times.

This means that the installation had detected that your video card is not in the list of cards supported by that package.

No worries, we finally get to launch the best piece of software you can find for this job.

Once the Modtool is started it should detect the c:\ati folder automatically if it exists.

If not, you will have to browse to the location where you extracted the files.

Now, with the folder selected, click the GO MOBILE button.

Sit back and relax.

Once modding is complete you are asked to launch the setup again.

I suggest you click yes at that stage.

Once the driver is getting installed, you might get a message about windows driver signing, click continue otherwise the driver won't install.